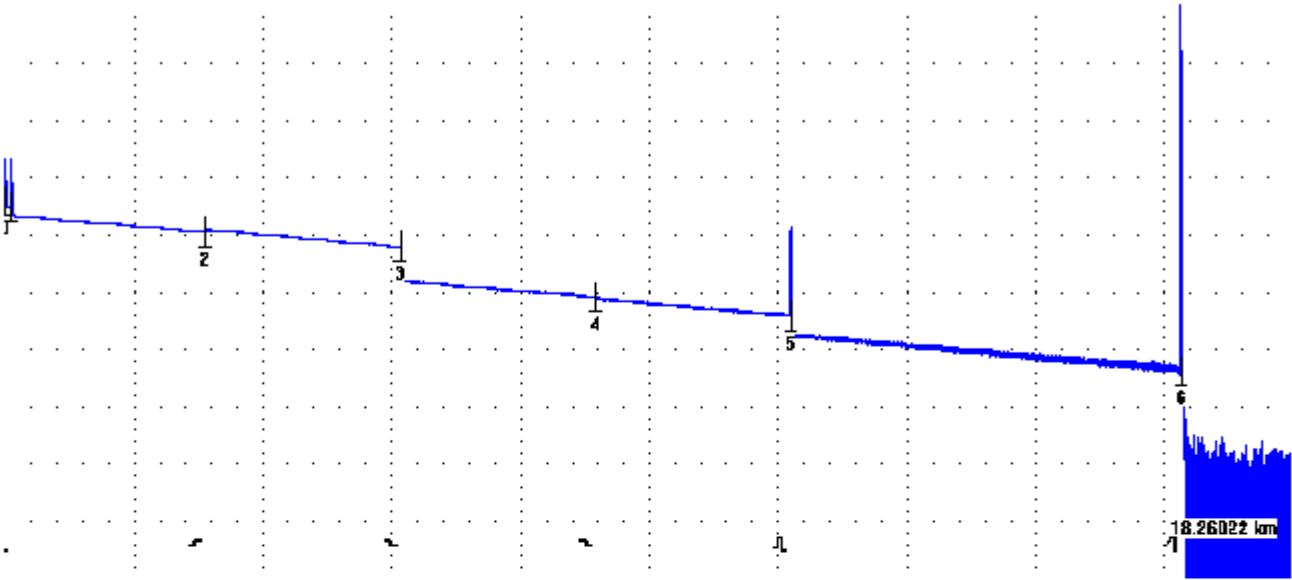


Fiber8_1310.sor



X: [0.00000, 20.00408] km; 2.00041 km/div
Y: [-63.999, -29.254] dB; 3.475 dB/div

06.04.2016 08:53:42
#839957
1304.5 nm

Cable ID:
Fiber ID: Fiber8
Fiber Type: [G.652] conventional SM fiber

Originating Location:
Terminating Location:

Line Status: as-built condition
Trace Type: standard trace
Operator:
Comment:

Refractive Index: 1.4677
Backscattering coef.: -80 dB
Acquisition range: 20 km
First data point: 0.00000 km
Last data point: 20.00408 km
Sampling Resolution: 0.32 m
Pulse Width: 50 ns
Number of Averages: 3210

Analysis parameters:
Event Loss Threshold: 0.020 dB
Reflectance Threshold: -65.535 dB
End of Fiber Threshold: 5.000 dB

End-to-end loss: 9.820
ORL: 33.177

#		Distance, km	Splice loss, dB	Reflectance, dB	OF loss,
	dB/km	R	Cumulative loss, dB		
0		0.00000		-55.415	
1		0.10276	0.471	-55.220	
2	*0.516 S	3.12551	0.524 -0.165		
3	*0.332	6.15556	12.3681		
4	*0.340	9.18086	40.4097		
5	*0.332	12.20517	5.524	-49.682	
6	*0.335 R	18.26022	7.732 >5.000	-15.699	
	*0.335		9.761		