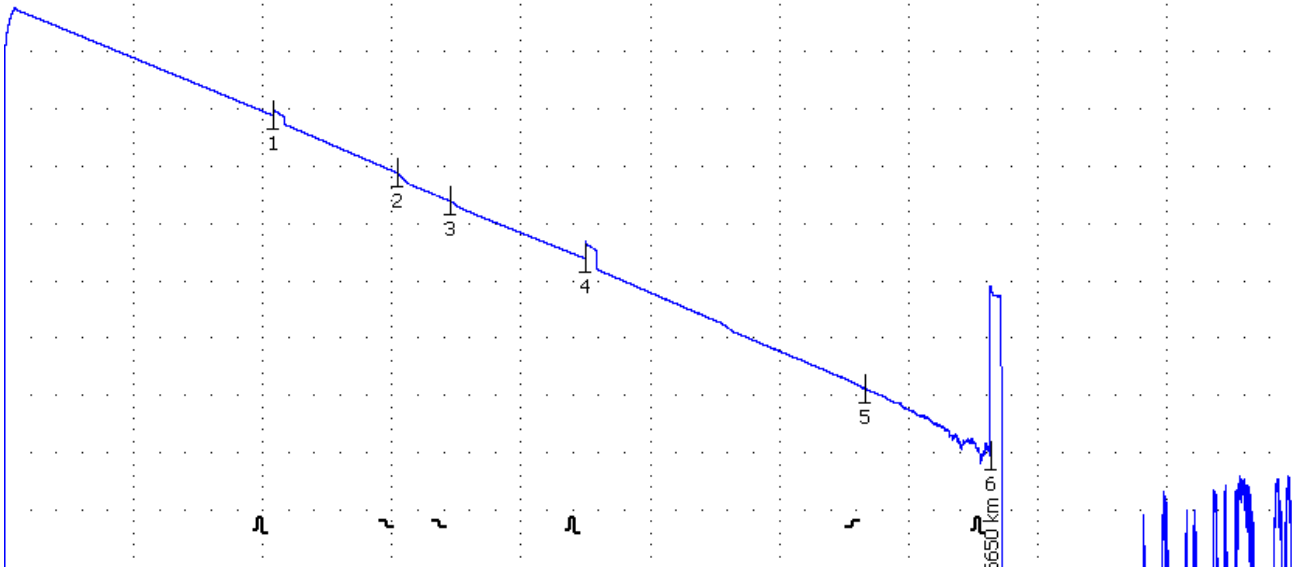


sample_long_1625.sor



X: [0.00000, 239.99959] km; 23.99996 km/div
Y: [-50.000, 0.000] dB; 5.000 dB/div

02.08.2012 11:41:53
OR-2-3 RTU/2H2 #52011
SM-1625

CID:
FID:
FT: [G.652] conventional SM fiber
OL:
TL:
CDF: as-built condition
TT: standard trace
OP:
CMT:

n: 1.475
BC: -81 dB
Lmax: 240 km
L1: 0.00000 km
L2: 239.99958 km
dL: 7.6 m
TP: 20000 ns
Nav 64
LT: 0.200 dB
RT: -60.000 dB
ET: 6.000 dB
CT: 0.250 dB/km

#		Distance, km	Splice loss, dB	Reflectance, dB	OF loss, dB/km	Cumulative loss, dB
0	S	0.00000				
1	R	50.23002	0.335	-43.487	0.192	9.644
2	S	73.10317	0.540		0.202	14.600
3	S	83.01917	0.272		0.193	17.053
4	R	108.20174	0.495	-37.787	0.188	22.060
5	S	160.11409	-0.093		0.208	33.352
6	R	183.56650	>6.000	-8.432	*0.257	39.287